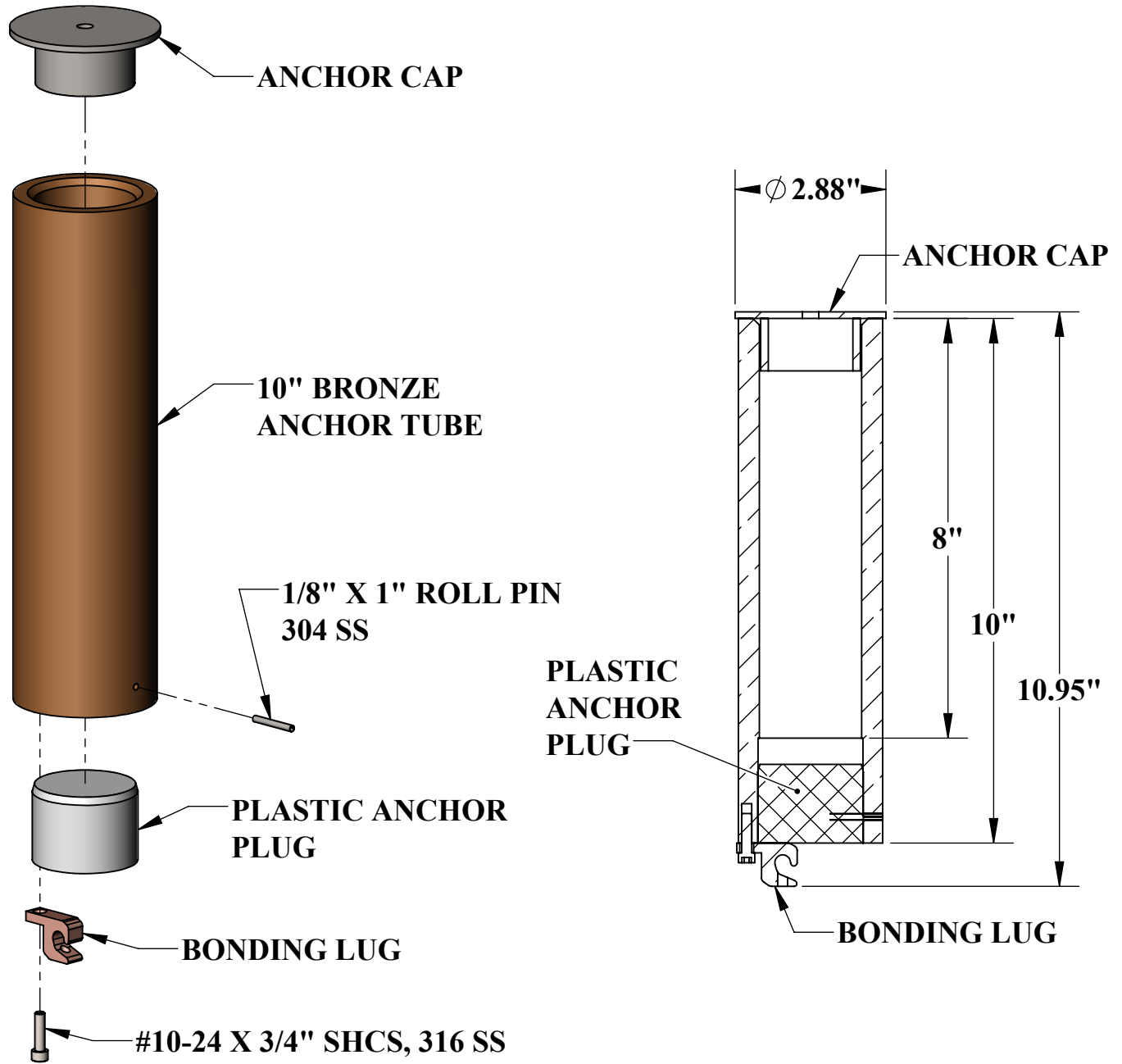


SCOUT 10" ANCHOR SPEC



SPECIFICATIONS:

THE SCOUT 10" ANCHOR ASSEMBLY INCLUDES ONE (1) 1.9" I.D. X 10" BRONZE ANCHOR, ONE (1) STAINLESS STEEL SCOUT ANCHOR CAP, ONE (1) HDPE ANCHOR PLUG, ONE (1) COPPER BONDING LUG, ONE (1) #10 SOCKET HEAD CAP SCREW AND ONE (1) 1/8" ROLL PIN.



9889 GARRYMORE LANE
MISSOULA, MT 59808
(406) 549-0769
FAX (406) 549-2602

NOTE:
*SPECIFICATIONS ARE SUBJECT TO CHANGE WITHOUT NOTICE

PRODUCT:		SCOUT 10" ANCHOR	
PART #:		F-808SA-10	
SCALE:	1:3	DATE:	6/13/2017
DRAWN BY:	KR	REVISION:	A