



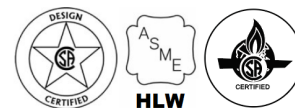
Product Submittal for ASME Digital Low NOx  
Gas Pool Heater  
Models B-R207A – B-R407A

Date: \_\_\_\_\_ Job: \_\_\_\_\_ Location: \_\_\_\_\_  
Equipment Tags: \_\_\_\_\_ Engineer: \_\_\_\_\_ Contractor: \_\_\_\_\_  
Model: \_\_\_\_\_ Notes: \_\_\_\_\_  
Prepared by: \_\_\_\_\_ Indoor  Outdoor  Gas Type: Natural Gas  Propane

- 82% Efficiency
- ASME code bronze headers
- ASME code copper-fin tubes
- 75 lb. pressure relief valve
- Small footprint
- Unitherm governor anti-condensation control
- Internal bypass for high flow rates (up to 125 gpm)
- Indoor/outdoor
- SCAQMD Rule 1146.2 certified, Low NOx < 55 ppm
- Proudly assembled in the USA



Shown with outdoor top





## Product Submittal for ASME Digital Low NOx

Job: \_\_\_\_\_

### Features and Options

#### Heat Exchanger

- ASME HLW stamped; 100 PSIG MAWP
- National board registered
- Bronze headers
- Fin tubing
  - Copper (standard)
  - A-3 Cupronickel
- ASME steel tube sheet
- Silicone O-rings
- High limit, manual reset, fixed, 160°F
- High limit, auto reset, fixed, 135°F
- 75 PSIG Pressure relief valve
- Flow configuration (two-pass)

#### Power

- 120/240V, 60Hz, 1 Ph power supply

### Control

- 100% Pilot shut-off
- Electronic, intermittent ignition pilot (IID)
- High limit control
- On/off Switch
- 120/240/24V, Transformer
- Flame rollout switch
- Water pressure switch
- Dual electronic temperature sensor
- Digital display with diagnostics
- Water connections
  - Right hand (standard)
  - Left hand (field change)

### Gas Control Train

- Natural gas only
- Combination control valve
- On/off Firing

### Construction

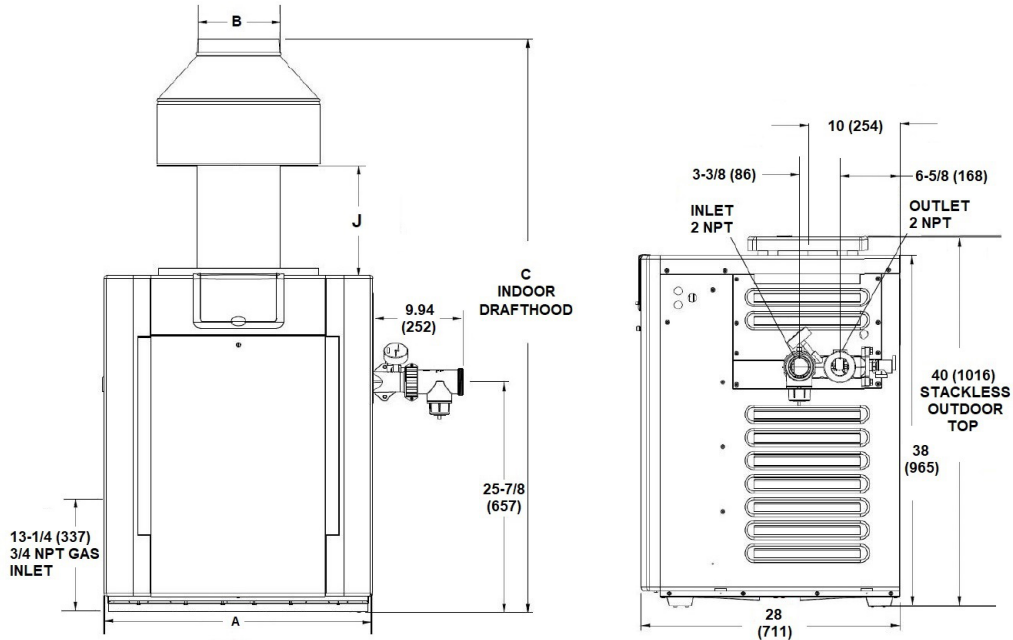
- Front controls
- Stainless steel burners
- Polytuf powder-coat finish
- Indoor/outdoor
- Can be installed on combustible surfaces (not on carpeting)
- ANSI Z21.56 Design certified

### Venting

- Outdoor stackless top (standard)
- Indoor draft diverter, loose (optional)
- D-2 Power vent indoor, loose (see P/N 241243)
- D-10 Residential indoor drafthood
- D-13 Residential high wind top (optional outdoor)

### Other Options

- PoolStat cover/lock kit
- X-10 Restraint bracket (Florida code requirement)



Heater Model	MBTUH (kWh) Input	Dimensions - Inches (mm)				Approx. Shipping Weights lbs. (kg)	
		Cabinet Width (A)	Indoor Draft Hood Flue Dia. (B)	Height with Indoor Draft Hood (C)	(J)	With Stackless Top	With Indoor Draft Hood
B-R207A	199.5 (58.47)	20 (508)	6 (152)	55-5/8 (1413)	11-3/4 (298)	200 (91)	12 (5)
B-R267A	266.0 (77.96)	23 (584)	7 (178)	56 (1422)	11 (279)	220 (98)	15 (7)
B-R337A	332.5 (97.45)	26 (660)	8 (203)	57 (1448)	10-5/8 (270)	240 (109)	17 (8)
B-R407A	399.0 (116.94)	29 (737)	9 (229)	58-1/2 (1486)	12-1/8 (308)	260 (118)	20 (9)

Notes:

1. Ratings are for natural gas and elevations up to 5,000 feet above sea level. For elevations over 5,000 feet, unit will be de-rated; consult the factory.
2. Manufactured under Patent No. 3,623,458.

Heater Model	Power Consumption
B-R207A	120VAC - 6 amps 240VAC - 3 amps
B-R267A	
B-R337A	
B-R407A	